

Plan for this week!

<p>Thurs. 7/31</p> <p>Picture Day!</p> <p>8:30am -Arrive in Hair -Arrive in Make-up</p>	<p>Fri. 8/1</p> <p>Preschool Show + Opening night!</p> <p>8:30am -Arrive in Hair -Arrive in Make-up</p>	<p>Fri. 8/1</p> <ul style="list-style-type: none"> • 3:30pm Mic'd students stay after workshop for mic check (Pack a dinner) • 5:30pm Non mic'd students arrive dressed and ready <p>All enter through purple room exterior door!</p>
<p>Sat. 8/2</p> <ul style="list-style-type: none"> • 4pm Mic'd students arrive dressed and ready • 5:30pm Non mic'd students arrive dressed and ready <p>All enter through purple room exterior door!</p>	<p>Sun. 8/3</p> <ul style="list-style-type: none"> • 12pm Mic'd students arrive dressed and ready • 1:30pm Non mic'd students arrive dressed and ready <p>All enter through purple room exterior door!</p>	<p>Please Note!</p> <p>Although we won't be holding a formal cast party this time, we encourage you to celebrate your child's hard work and accomplishments in a way that's meaningful for your family. They've earned it!</p>

Microphone List

1. Alex (Cammy)
2. Marty (Emmy)
3. Gloria (Zea)
4. Melman (Kaylee)
5. Skipper (Molly)
6. Kolawski (Sadie)
7. Rico (Kenzie)
8. Private (Annabelle)
9. King Julien (Matanyah)
10. Mason (Scarlett)
11. Zelda (Cassie)
12. Zeke (Ayva)
13. Zoe (Hannah)
14. Maurice (Maya)
15. Mort (Maeve)
16. Lynn (Evelyn)
17. Lew (Ella)
18. Lee (Emma T)
19. Lars (Leah)
20. Old Lady (Abby)
21. Ship's Captain (Lylah)



DREAMWORKS®

MADAGASCAR

A MUSICAL ADVENTURE JR.™

Alex



Big curls in half
up half down!

Lion make-up!



Singular bubble
braid!



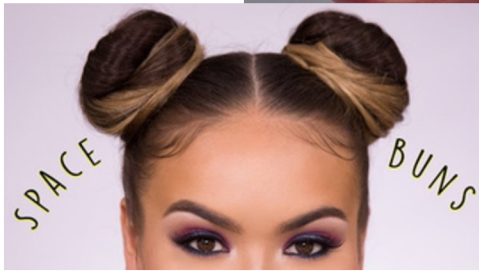
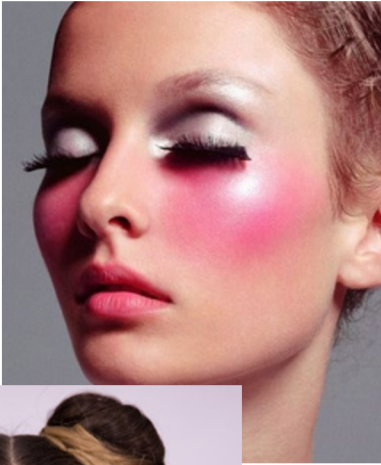
Marty

Some black
and white
stripes like
this near the
eyes with a
dark lip and
black nose

Gloria

Two space
buns!

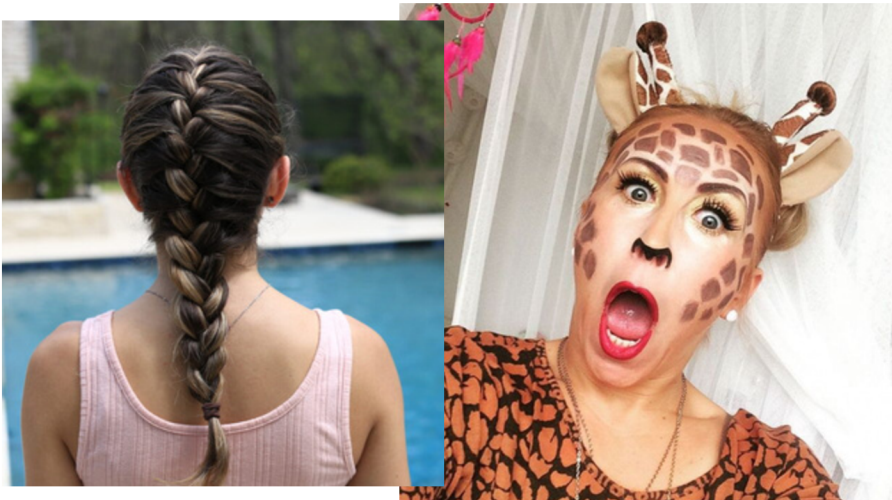
Lots of blush! With light
eyeshadow and a light
lipstick. Think more
make-up and less face
paint.



Melman

Singular regular
braid!

Giraffe like
squares with a
dark nose and not
bright lipstick.



Strange pic, ignore the pose

Penguins

Two low space buns with a middle part!



Purple Eyeshadow, foundation, blush, mascara,
natural colored lipstick

Lemur + Foosa Ensemble

Slicked back low bun with a middle part.

Please use gel and hairspray!



Purple Eyeshadow, foundation, blush, mascara, natural colored lipstick

